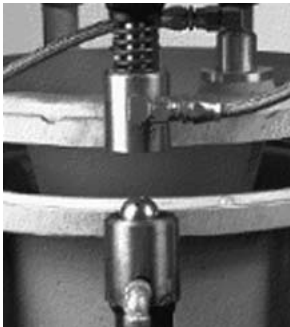


GAS TRANSFER ASSEMBLY



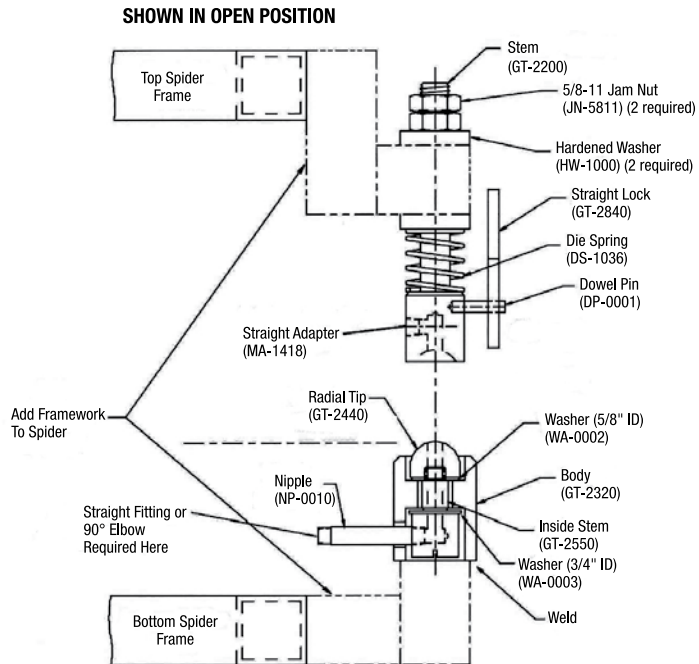
Open gas transfer assembly



Closed gas transfer assembly

Reduce eject cycles from failure to reconnect air lines.

The gas transfer assembly reduces operator labor by eliminating the disconnecting and reconnecting of air lines. As the spider opens and closes, the air lines automatically connect and disconnect. Installing an air manifold block (see page 13) before or after the system, will allow you to connect as many molds as necessary whether gassed above or below the parting line.



Ordering Information

GTA-1200	Gas Transfer Assembly
GT-2200	Gas Transfer Stem
GT-2320	Gas Transfer Body
GT-2440	Gas Transfer Radial Tip
GT-2550	Inside Stem
GT-2660	Gas Transfer Angle Lock
WA-0002	5/8" ID Washer
WA-0003	3/4" ID Washer
HW-1000	Hardened Washer (2 required)
JN-5811	5/8-11 SS Jam Nut (2 required)
DS-1036	M36 Die Spring
DP-0001	1/4" x 1" Dowel Pin
NP-0010	Nipple, 1/8" NPT Both Ends
MA-1418	Straight Adapter
AD-2000	Adapter