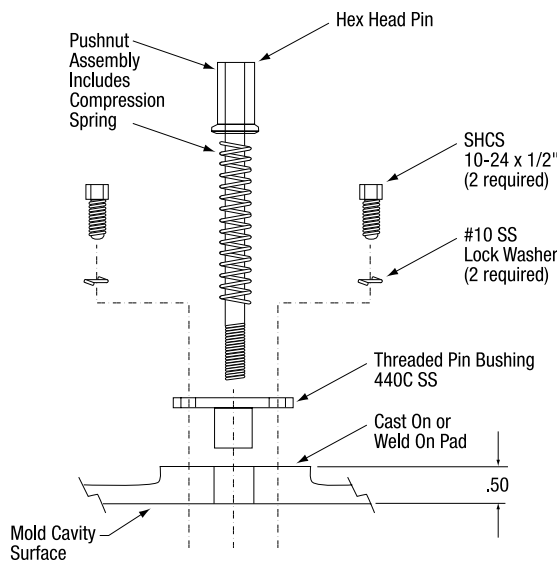


THREADED INSERT PINS AND INSERT BUSHINGS



Threaded Insert Pins with a hex head fits standard wrench sockets.

Lakeland Mold's threaded hex head insert pin is the surest way to hold molded-in inserts in place. A compression spring allows the insert to pull away from the mold wall as the plastic part shrinks. The spring is connected to the pin and cannot fall out.



Ordering Information

HXA-1024	#10-24 Threaded Hex Head Pin Assembly
HXA-1031	#10-32 Threaded Hex Head Pin Assembly
HXA-1400	1/4-20 Threaded Hex Head Pin Assembly
HXA-5160	5/16-18 Threaded Hex Head Pin Assembly
HXA-3800	3/8-16 Threaded Hex Head Pin Assembly
TB-1000	#10 Threaded Pin Bushing
TB-1400	1/4 Threaded Pin Bushing
TB-5600	5/16 Threaded Pin Bushing
TB-3800	3/8 Threaded Pin Bushing

Note: Assembly includes pin, bushing, pushnut, (2) SHCS #10-14 x 1/2" and (2) #10 SS Lock Washers.



Insert Bushings with Weldcaps

Insert bushings and weld caps come in multiple sizes and are used to allow for passage of pins through a mold wall while minimizing wear. In-stock available sizes: #10, 1/4" and 1/2".

Ordering Information

IB-1000	#10 Insert Bushing with Weldcap
IB-1400	1/4" Insert Bushing with Weldcap
IB-1200	1/2" Insert Bushing with Weldcap

Note: Other sizes available by request.